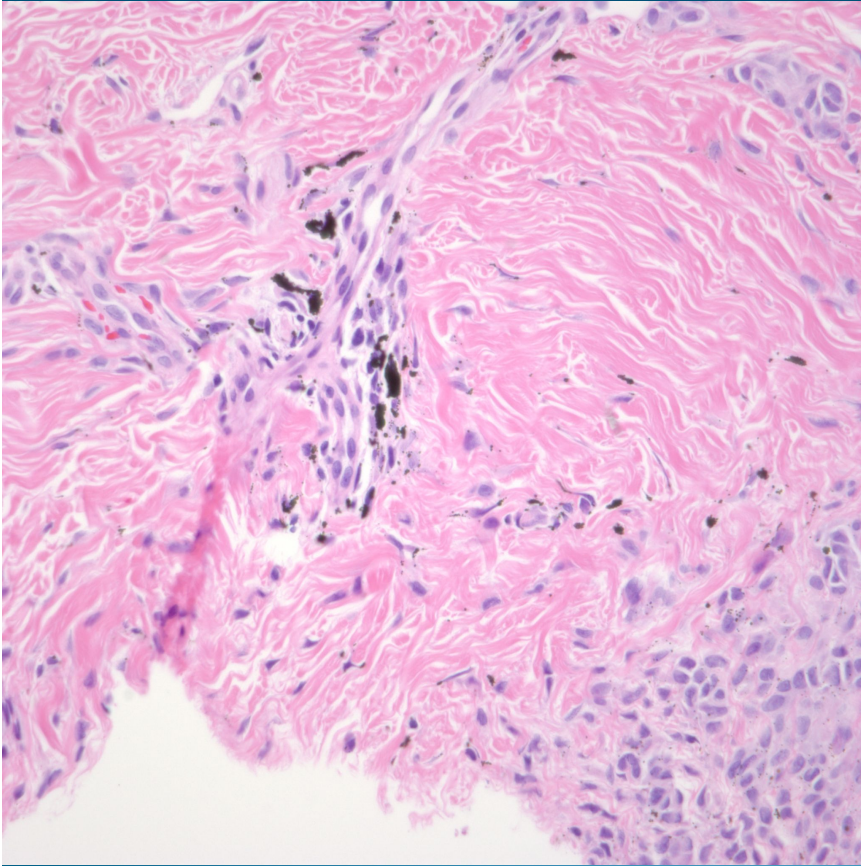
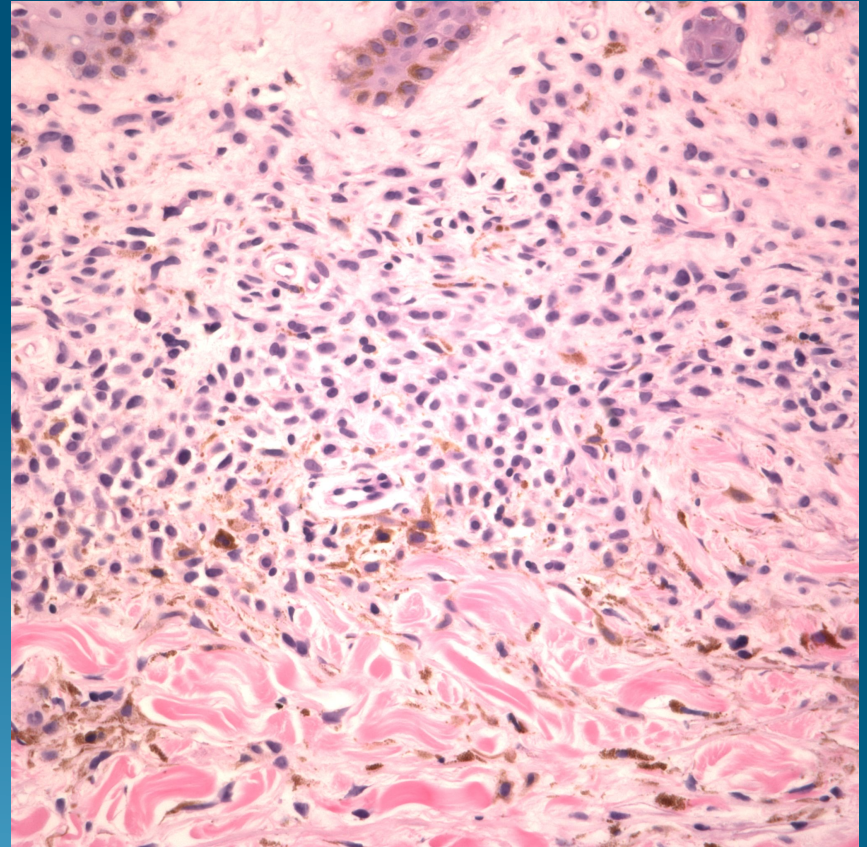


Which is the tattoo with melanocytic nevus and which is the combined nevus (intradermal nevus with blue nevus)?

Tattoo with Nevus



Combined nevus



Pearls

Tattoo and nevus

Dark pigment, varying shades, usually non-refractile, usually finer size than melanin

May have foreign body reaction or scar from procedure

Combined Nevus

Dark pigment with brownish hue

May be admixed with epithelioid cells (type A and B nevus cells)

Difficult cases may need IHC stains or Fontana-Masson